

Guard Patrol



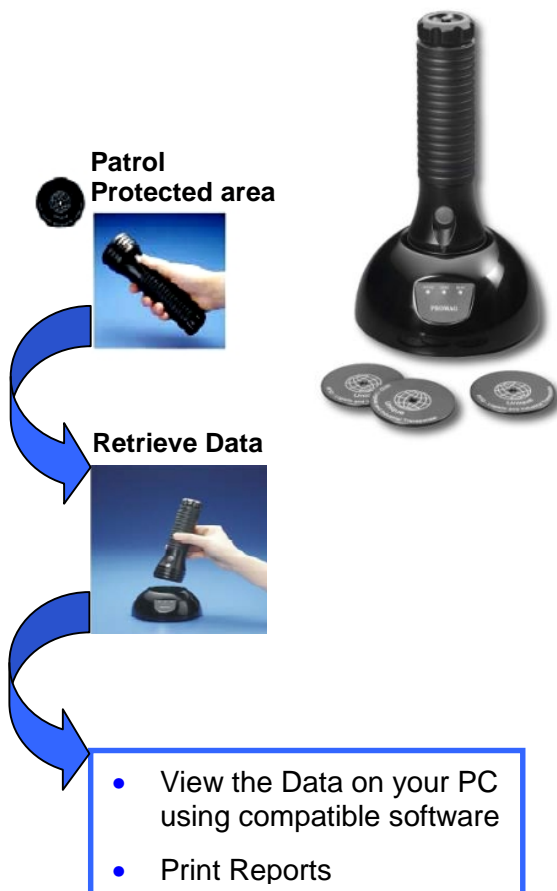
The Tempus TLG20 Guard Tour/Patrol System utilizes RFID technology making it extremely robust and very easy to use. The rugged construction of the Baton means that it is a durable device for use in most environmental conditions. The Software package that compliments the Tempus TLG20 Guard Tour/Patrol System is uncomplicated in its application and provides a complete working solution for all aspects of Security Guard patrolling. This system can be used as a security feature to protect patrolling guards in vulnerable locations or to check that guards are doing their security patrols by ensuring that they reach particular areas at specific times. The advantages of this system could also be used for other applications including Asset Management and for generating maintenance and inspection records for service Engineers.

Applications

- Security Patrol
- Police/Military Patrol
- Building Guard Patrol
- Community Guard Patrol
- Equipment Inspection Record
- Maintenance Inspections Record

Features

- Robust Baton type metal housing c/w Belt Carry Case
- Contact-less reading
- Single-cell battery operation
- Journal memory 14320 records
- IrDA data transfer from Handset to Base Station
- Water-resistant and shock-proof
- Max 100,000 scans on 1 heavy-duty 'C' Alkaline battery
- Simple one button operation for scan & communication
- LED and buzzer to show operation status
- Upgradeable Firmware
- Power saving feature for long battery operation
- IP66 approval Specifications



Specifications:

Model / Specification	Handset	Base Station
Interface	IrDa USB	RS232
Power Requirement	Size C / UM-2 Single-Cell Alkaline Battery * 1	USB: 5V DC 200mA RS232: 5VDC
Reading Range	~ 4cm	-
Memory	512K (14320 Records)	-
Indicator	LED / Beeper	LED
Frequency & Format	125KHz, ASK, 64 bits, Manchester Encoding	-
Operating Temperature Range	-10 ~ +50 C°	-10 ~ +50 C°
Dimensions	Ø52 x 168 mm	Ø120 x 52 mm
Material	Metal housing with Polycarbonate Reading Head	Polycarbonate
Weight	0.31 kg	0.32 kg